



Premium Shade Solutions

# 300 PVC RANGE UMBRELLA



**EXTREME MARQUEES**



PRODUCT SHOWN  
3m x 3m - 300 PVC Series  
800GSM PVC - White







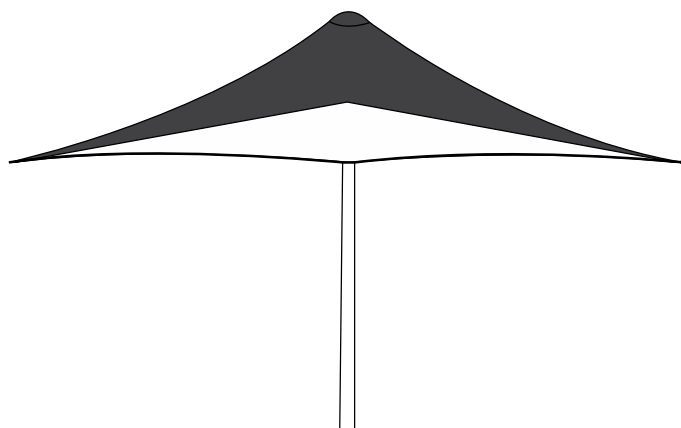


PRODUCT SHOWN  
4m x 4m - 300 PVC Series  
800GSM PVC - White

# 300PVC SERIES

Our Commercial range of umbrellas have a striking streamlined European style and are designed for permanent outdoor applications. They are engineer certified to 112 kph open or 148 kph when opened. The 90mm diameter aluminium pole extrusion ranges from 3mm to 10mm thick to ensure strength and safety. The ribs are a hefty 45mm x 60mm and are 4mm thick. The canopy is made from a heavy duty 800 gsm PVC with a lifespan of more than 10 years.

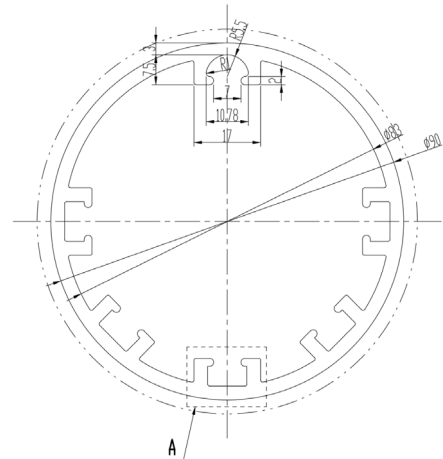
## Specifications



### **Square**

2m x 2m, 3m x 3m & 4m x 4m

# Specifications



## Main Frame profile

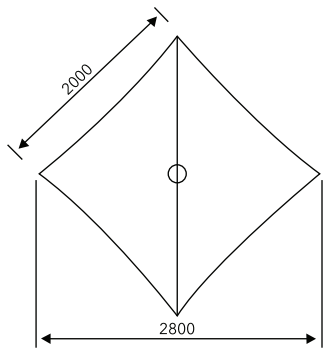
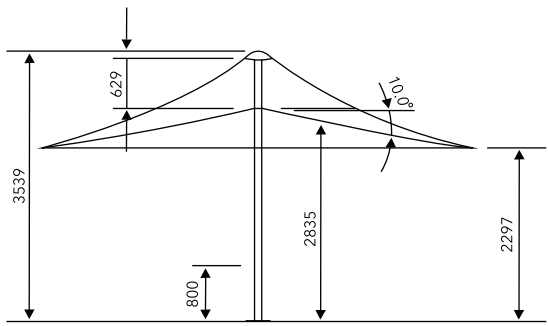
90mm dia. x 7mm thickness

Size	2m x 2m	3m x 3m	4m x 4m
Finished Height	3539mm		
Clearance	2297mm		
Umbrella Diameter	2.8m	4.2m	5.56m
Total Weight	85kg	89kg	96kg
Frame Pole	90mm diameter powder coated aluminium		
Connectors	Extruded powder coated aluminium		
Truss to Roof Connector	Marine Grade Stainless Steel - SAE 316		
Rib Bars	61x45mm powder coated aluminium		
Open / Close	Easy lift crank (removeable)		
Base	Cast steel powder coated		
Roof Cap	Yes		
Fabric	PVC 800GSM		
Frame Colour	White		
Printing	Full Colour Digital Printing		
Engineer Certificate	Yes		
Wind speed open	112km/h		
Wind speed closed	148km/h		
Transport Box	270 x 53 x 60cm	266 x 53 x 60cm	316 x 53 x 60cm

# Technical Information

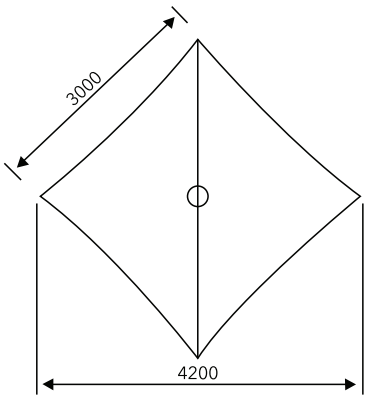
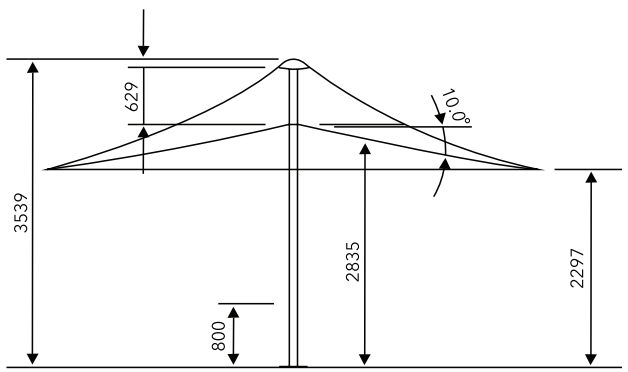
## Square

2m x 2m



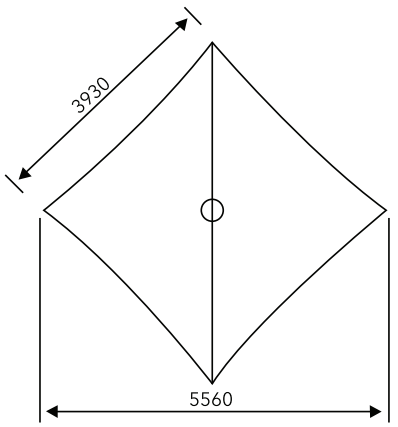
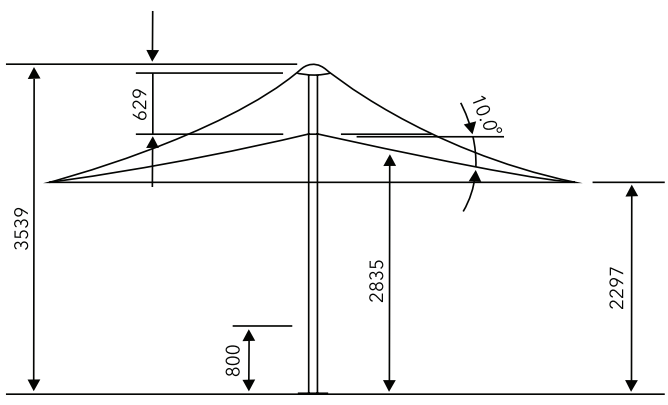
## Square

3m x 3m



## Square

4m x 4m



# Fabric Colours

## 800gsm Belgium 100% PVC

The Commercial 300 series is made with heavy duty 800 gsm PVC with a lifespan of more than 10 years. Perfect for permanent use at restaurants, cafes or resort or home pools. The PVC is waterproof, fire retardant and is rated UV 50+ blocking out 99% of UV radiation.



**White** Pantone White



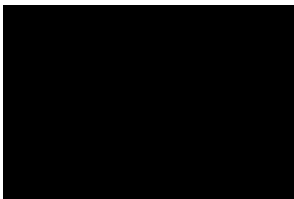
**Maroon** Pantone 209 C



**Blue** Pantone 7692 C



**Yellow** Pantone 7408 C



**Black** Pantone Black 6 C



**Red** Pantone 7427 C



**Light Blue** Pantone 7703 C



**Orange** Pantone 1375 C



**Grey Granite** Pantone 408 C



**Pink** Pantone 7423 C



**Green** Pantone 7733 C

# Frame Colour



# Printing

## Full colour

Large format digital printing refers to method of printing from a digital based image directly to the PVC marquee material. Once the print has dried a hot lacquer is applied to the print surface to seal the print to avoid scratches.

## Specifications

Large format digital printing  
Heat welded seams  
Hot lacquer  
Print finish glossy

## Features

The PVC material is long wearing ultra violet light resistant. A hot lacquer is applied to the printed surface to prevent wear, tear and scratches to the printed surface. All seams and heat welded.

## Use

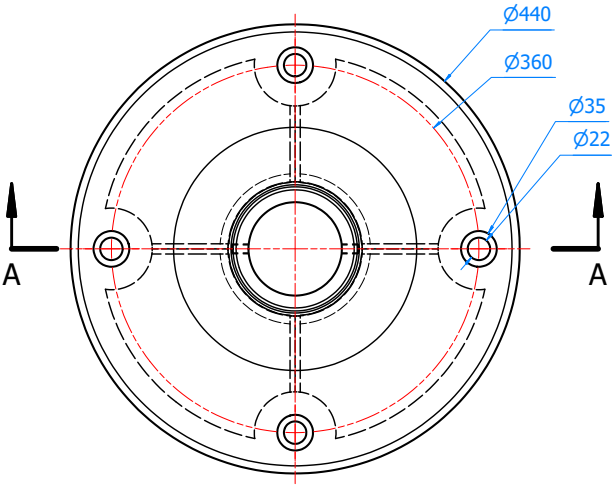
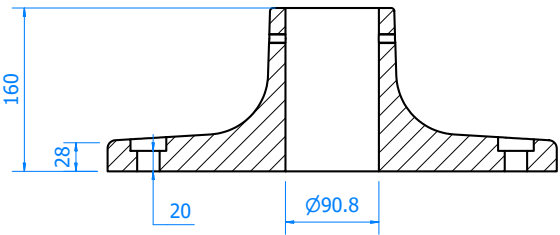
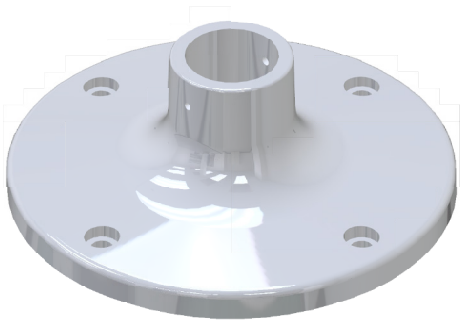
Ideal for outdoor extended use



# Ground Fixing

**Base included**

Cast Steel Base – 440mm diameter  
*Included for all sizes*



# Engineer Certification

## 300 PVC Series

Engineer Certificate



<https://www.extreme-marquees.com.au/pdf/Umbrellas/Certificates/300-PVC-Engineer-Certificate.pdf>

## Instructions



## Set-up Video

<https://vimeo.com/728022534>



**P** 1300 667 255

[admin@flare-shade.com.au](mailto:admin@flare-shade.com.au)

3 Bailey Court, Brendale, QLD, Australia 4500

**SHOP ONLINE** [www.flare-shade.com.au](http://www.flare-shade.com.au)

**P** 1300 850 832 **F** 07 3355 7720

[admin@extreme-marquees.com.au](mailto:admin@extreme-marquees.com.au)

3 Bailey Court, Brendale, QLD, Australia 4500

**SHOP ONLINE** [www.extreme-marquees.com.au](http://www.extreme-marquees.com.au)

