



Premium Shade Solutions

# 300 PVC RANGE UMBRELLA



**EXTREME MARQUEES**





PRODUCT SHOWN  
3m x 3m - 300 PVC Series  
800GSM PVC - White









PRODUCT SHOWN  
4m x 4m - 300 PVC Series  
800GSM PVC - White

# 300PVC SERIES

Our Commercial range of umbrellas have a striking streamlined European style and are designed for permanent outdoor applications. They are engineer certified to 112 kph open or 148 kph when opened. The 90mm diameter aluminium pole extrusion ranges from 3mm to 10mm thick to ensure strength and safety. The ribs are a hefty 45mm x 60mm and are 4mm thick. The canopy is made from a heavy duty 800 gsm PVC with a lifespan of more than 10 years.



**Square**  
2m x 2m, 3m x 3m, 3.5m x 3.5m & 4m x 4m

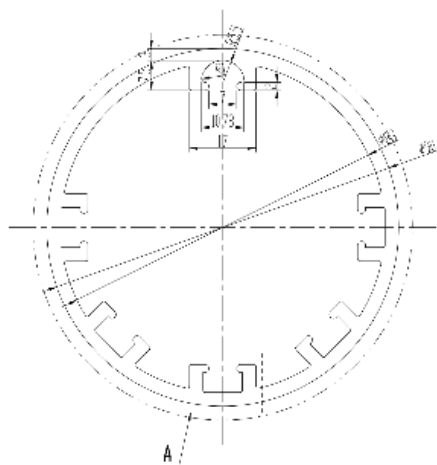


**Hexagonal**  
5m Hexagonal Diameter





Specifications

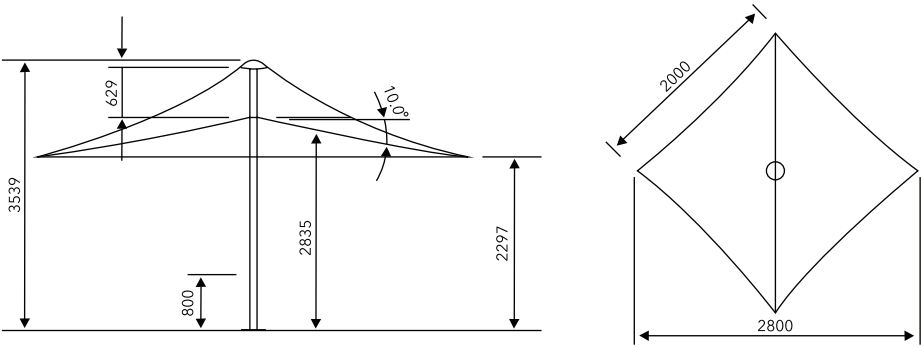


Main Frame profile  
90mm dia. x 7mm thickness

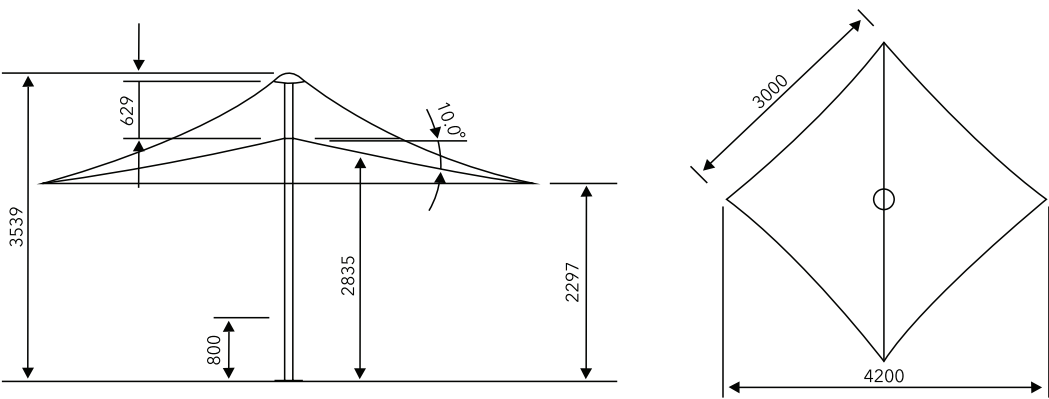
Size	2m x 2m	3m x 3m	3.5m x 3.5m	4m x 4m	5m Hex
Finished Height	3539mm				
Clearance	2297mm				
Umbrella Diameter	2.8m	4.2m		5.56m	
Total Weight	85kg	89kg		96kg	120kg
Frame Pole	90mm diameter powder coated aluminium				
Connectors	Extruded powder coated aluminium				
Truss Roof Connector	Marine Grade Stainless Steel - SAE 316				
Rib Bars	61x45mm powder coated aluminium				
Open / Close	Easy lift crank (removeable)				
Base	Cast steel powder coated				
Roof Cap	Yes				
Fabric	PVC 800GSM				
Frame Colour	White				
Printing	Full Colour Digital Printing				
Engineer Certificate	Yes				
Wind speed open	112km/h				
Wind speed closed	148km/h				
Transport Box Dimensions	266 x 53 x 60cm	266 x 53 x 60cm	291 x 53 x 60cm	316 x 53 x 60cm	383 x 53 x 60cm
Transport Box Weight	110kg	126kg	137kg	146kg	169kg
Warranty	Frame 5 years   Plain PVC 5 Years   Printed PVC 2 Years				

Technical Information

Square  
2m x 2m



Square  
3m x 3m

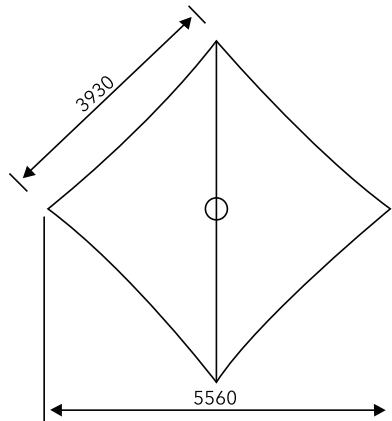
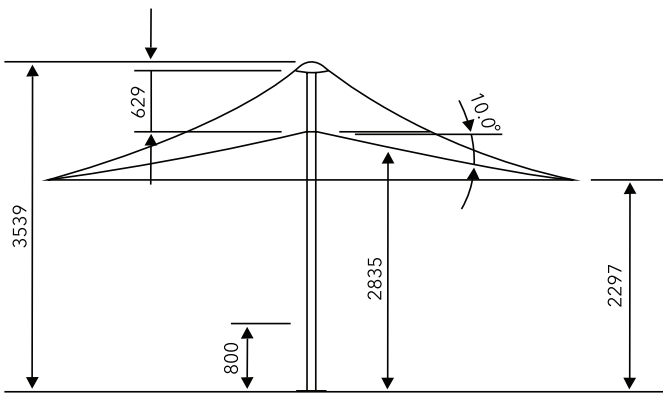


Square  
3.5m x 3.5m

# Technical Information

## Square

4m x 4m



## Hexagonal

5m

# Fabric

## 800gsm Belgium 100% PVC

The Commercial 300 series is made with heavy duty 800 gsm PVC with a life-span of more than 10 years. Perfect for permanent use at restaurants, cafes or resort or home pools. The PVC is waterproof, fire retardant and is rated UV 50+ blocking out 99% of UV radiation.



White Pantone White



# Printing

## Full colour

Large format digital printing refers to method of printing from a digital based image directly to the PVC marquee material. Once the print has dried a hot lacquer is applied to the print surface to seal the print to avoid scratches.

## Specifications

Large Format Digital Printing | Heat Welded Seams | Hot Lacquer | Gloss Print Finish

## Features

The PVC material is long wearing ultra violet light resistant. A hot lacquer is applied to the printed surface to prevent wear, tear and scratches to the printed surface. All seams and heat welded.



# Frame Colour

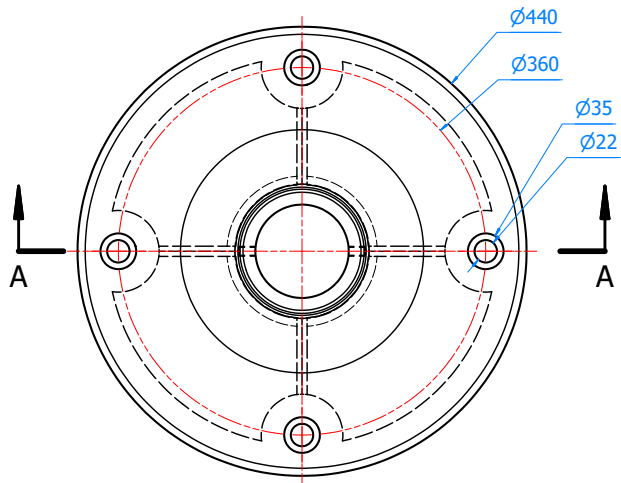
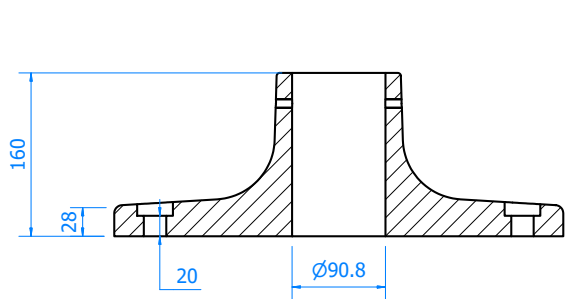
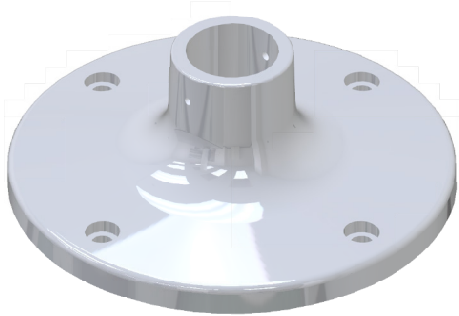
## White



# Ground Fixing

## Base included

Cast Steel Base 440mm diameter *\*Included for all sizes*





**P** 1300 667 255

[admin@flare-shade.com.au](mailto:admin@flare-shade.com.au)

3 Bailey Court, Brendale, QLD, Australia 4500

**SHOP ONLINE** [www.flare-shade.com.au](http://www.flare-shade.com.au)

**P** 1300 850 832 **F** 07 3355 7720

[admin@extreme-marquees.com.au](mailto:admin@extreme-marquees.com.au)

3 Bailey Court, Brendale, QLD, Australia 4500

**SHOP ONLINE** [www.extreme-marquees.com.au](http://www.extreme-marquees.com.au)

