

EXTREME MARQUEES



EMX ALPHA INSTRUCTIONS

Inflation & Deflation



LAY OUT



ACCESSORIES



INFLATION



SECURING



ENJOY

Roof Installation

Initial attachment required on first use only.

1.



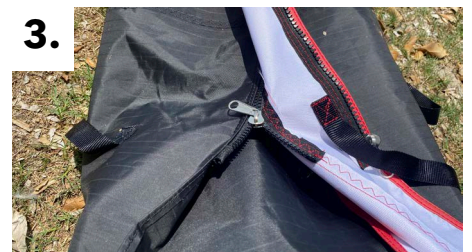
Lay the inflatable frame flat on the ground with zips facing upwards.

2.



Unroll roof and lay on top of the frame. lining up the roof and frame zippers.

3.



Zip roof to frame. (Roof installation will only need to be done on first use)

1.



Remove Inflatable Tent from Protective Cover.

2.



Roll out the Inflatable Tent.

3.



Lay the Inflatable Tent out flat & extend all legs.

4.



Layout walls and awning. Confirm positioning and zip together.

5.



Each leg on the Inflatable Tent has a valve. Ensure all valves are closed. Open one valve and connect pump to inflate.

6.



Connect the pump to selected Inflation Valve and begin inflation.

7.



During the inflation process, when legs become firm push up from underneath.

8.



Ensure all legs are lined up and canopy is centered. Check frame is firm.

9.



Connect pump to awning valve and inflate until awning is firm. (Do not over inflate)

10.



Position awning support tube into the Velcro located at the leg hub. Insert the two fiberglass rods into position to tension awning.

11.



Fix two water weights per frame leg. Attach leg strap to bottom water weight. Green guide ropes should be used in moderate to strong wind conditions.

IMPORTANT NOTES:

- Check the wind and weather conditions before commencing construction.
- Ensure you have the correct ground fixings for your application.
- For safety reasons it is recommended that 2 persons set up any Inflatable Tent.
- Ensure area is free from any sharp objects & overhead objects.
- In high winds or storms the inflatable should be deflated and stowed away.
- Green guide ropes should be used in moderate to strong wind conditions.
- Do not touch the over pressure valve system



1.



Remove Stakes and Guide Ropes or detach Sandbags.

2.



Ensure area is clear of persons.
Ensure area is dry and clean.
Unscrew all valves to deflate Tent.

3.



Remove all air from the tubes.

4.




Fold Tent up neatly laying the Canopy and Legs on top of each other.
Roll Tent up.

5.



Pack the dry and clean Inflatable Tent into Protective Cover.

IMPORTANT NOTES:

- Check the wind and weather conditions before commencing construction.
- Ensure you have the correct ground fixings for your application.
- For safety reasons it is recommended that 2 persons set up any Inflatable Tent.
- Ensure area is free from any sharp objects & overhead objects.
- In high winds or storms the inflatable should be deflated and stowed away.
- Green guide ropes should be used in moderate to strong wind conditions.
- Do not touch the over pressure valve system 

ACCESSORIES

INCLUDED ITEMS:



Stakes



Sandbags



Pump



Repair Kit

NOT INCLUDED



Generator



Extension Lead



Hammer / Mallet

