

Event **MARQUEES**

EXTREME MARQUEES

FOR SALE - IN STOCK - IMMEDIATE DISPATCH*





EXTREME MARQUEES

WHAT YOU'LL NEED

Drill / Impact Driver x2

Socket Set & Shifter

Ladder x2

Mallet

Forklift / Crane / Scissor Lift *

Tape Measure

Stringline

Level

Marking Pencil

Stanley Knife

Warning read instructions carefully before use.

Recommended procedure to follow in this document.

For safety reasons it is recommended that at least four persons set up any Crest Marquee.

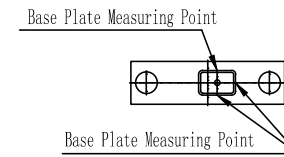
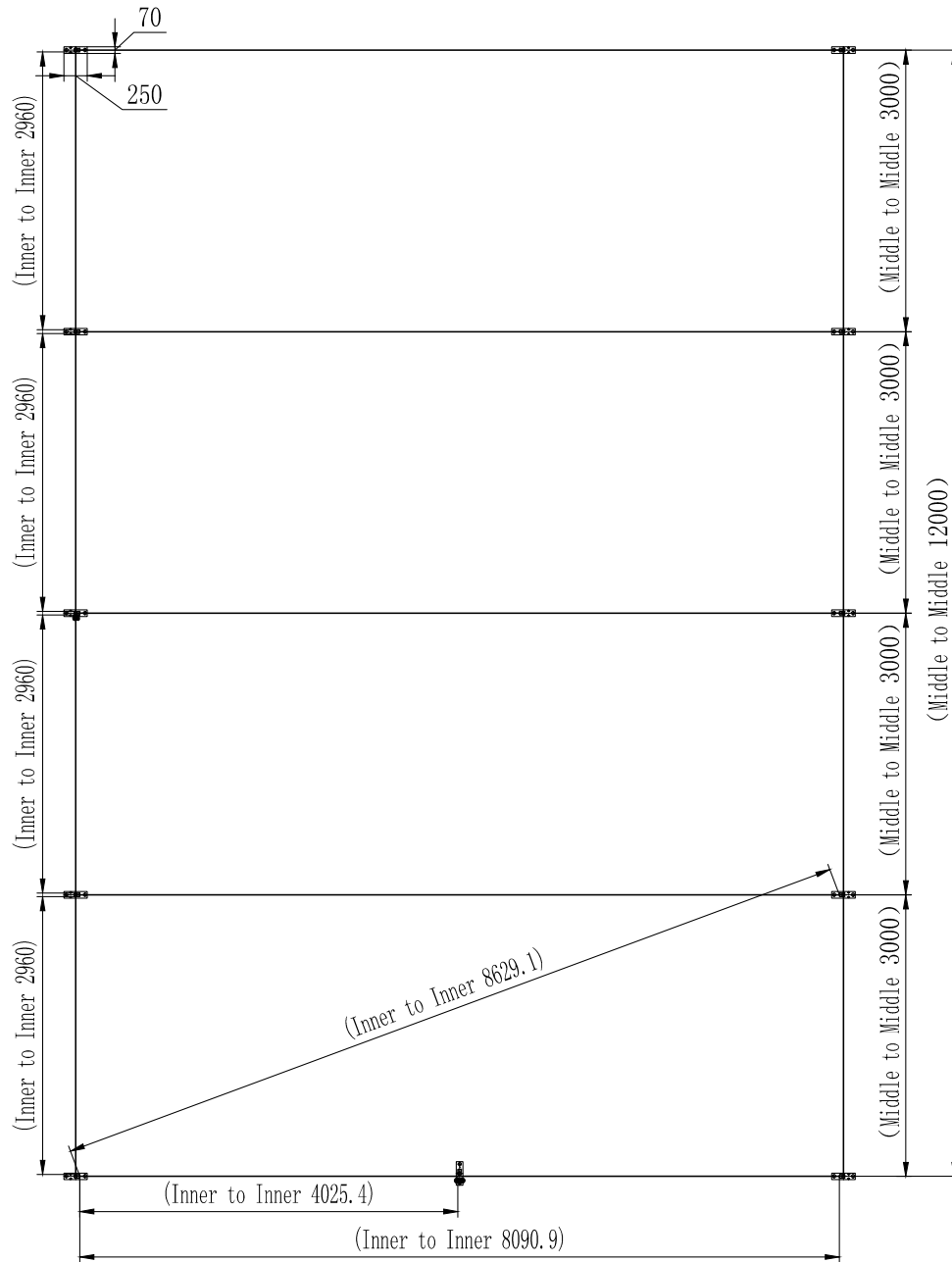
Ensure area is free from any sharp objects & overhead objects.



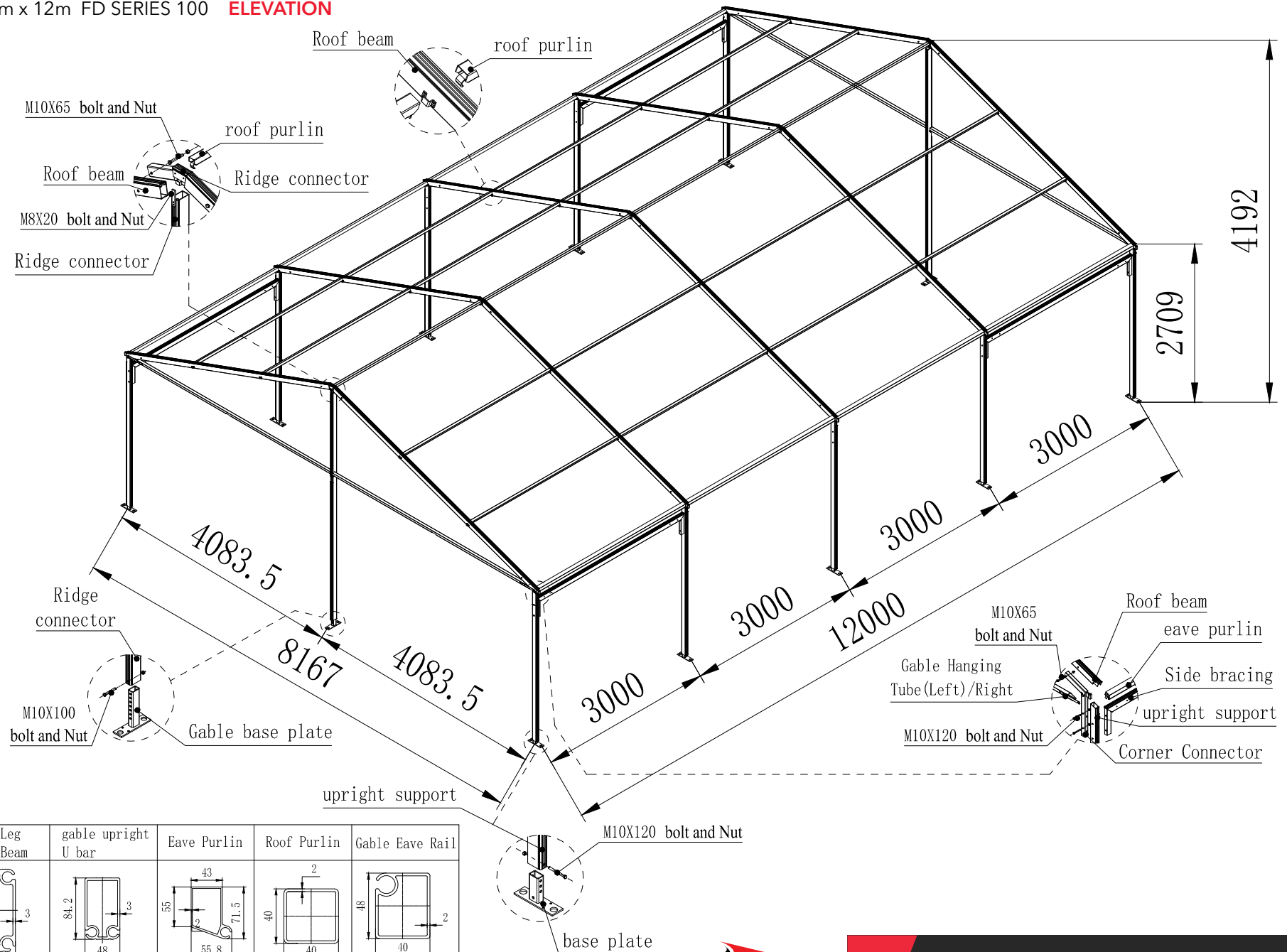
www.extrememarquees.com.au 1300 850 832

Item	Item Name	Specification	Unit	Qty	Packing
steel parts and PVC fabric	side base plate	70*250*148	pc	10	Steel packing box
	gable base plate	70*250*268	pc	2	
	eave connector	40*60*571	pc	10	
	eave tension screw	280mm	pc	10	
	ridge connector	48*84*471.2	pc	5	
	connecting tube	25*40*250	pc	8	
	ridge angle connecting tube	25*40*195	pc	4	
	fasteners	30*410	pc	2	
	bolts and nuts	M8*20	pc	3	
	bolts and nuts	M10*65	set	48	
	bolts and nuts	M10*80	set	5	
	bolts and nuts	M10*100	set	3	
	bolts and nuts	M10*120	set	28	
	pin puller	1450mm	pc	1	
	steel pin	800mm	pc	24	
	pull ropes	Ø16*20m	pc	2	
	white roof cover	2980*9197	pc	4	
Alumimun Frame	white gable cover	1701*4128	pair	2	
	white gable wall	4130*2730	pair	4	
	white side wall	2980*2730	pair	8	
	side leg	48*100*2600	pc	10	
	roof beam	48*100*4335	pc	10	
	gable leg	48*84.2*3957	pc	2	
	gable eave rail	40*48*3920	pc	4	
	side bracing	48*84.2*2952	pc	4	
	roof purlin	40*40*2950	pc	20	
	eave purlin	43*55*2950	pc	8	
	curve tension tube for side wall	31*50*2950	pc	8	
	curve tension tube for gable wall	31*50*4020	pc	4	
	bearing bar for side wall	25*2995	pc	8	
	bearing bar for gable wall	25*4100	pc	4	
	mounting fork for installation	3000	pc	1	

8m x 12m FD SERIES 100 SETOUT PLAN



8m x 12m FD SERIES 100 **ELEVATION**



CREST MARQUEE OVERVIEW

1. Introduction

The Extreme Marquees Crest main structure is made up of extruded aluminium and steel. The adjustable frame Base Plate is able to be used on any ground surface.

Frame Specifications

Max Allowed Windspeed: 80km/hr 0.3kn/m²

Eave Connection: Hot-dip galvanized steel insert

Framework Material: Hard pressed extruded aluminium 6061/T6 (13HW)

Cover Fabrics/Material

850gsm White or Coloured PVC

950gsm Clear PVC

Wall Fabrics/Material

650gsm White PVC

850gsm Coloured PVC

950gsm Clear PVC

All Materials are:

Waterproof

UV Protective

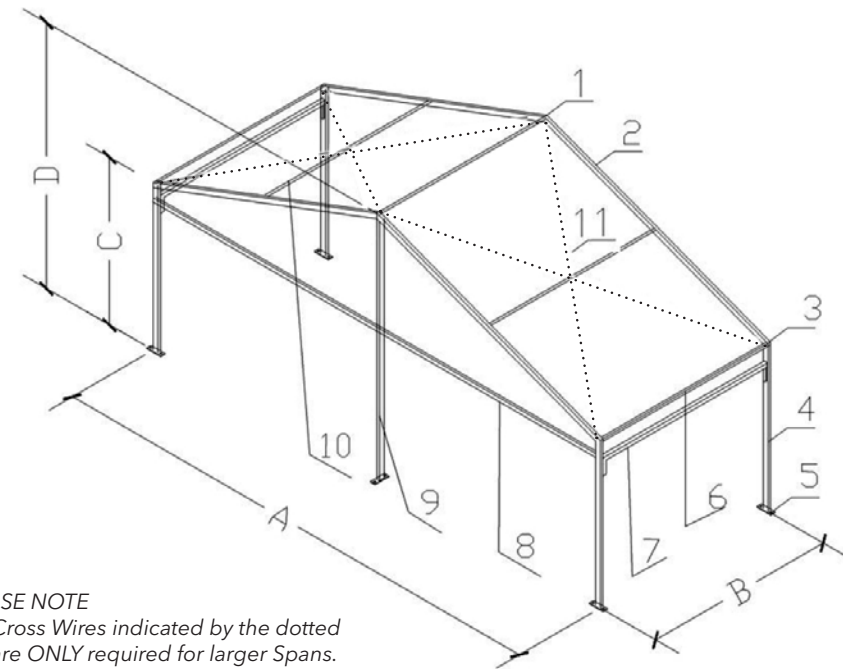
Flame Retardant (B1 DIN 4102/GB8642)

All seam/joins are constructed using high frequency welding

For more information refer to Engineering Certificate and Product Specifications online or with your Sales Consultant.

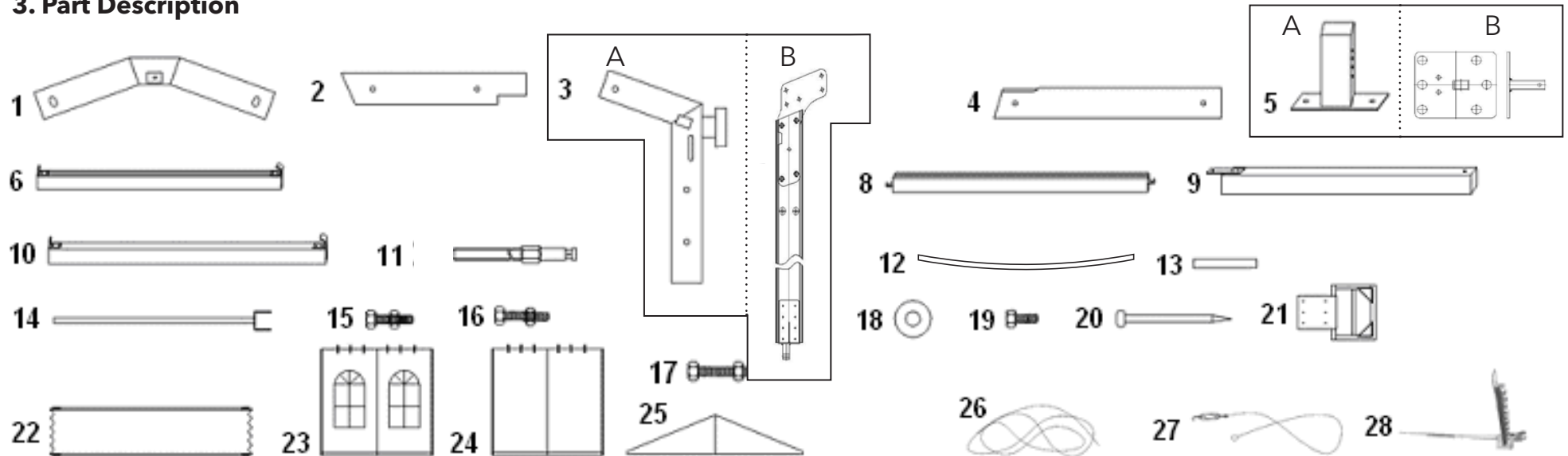
<https://www.extreme-marquees.com.au/event-marquees/crest-marquees/>

2. Structure Description



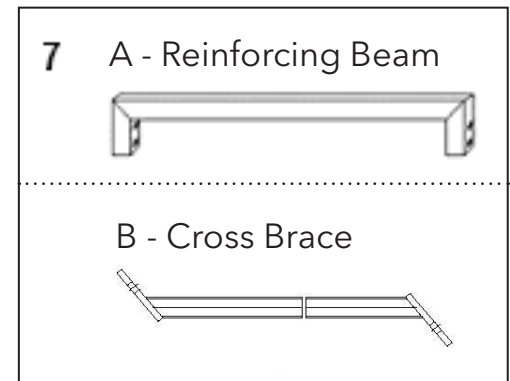
PLEASE NOTE
The Cross Wires indicated by the dotted line are ONLY required for larger Spans.

3. Part Description



Item #	Description
1	Ridge Connector
2	Roof Beam
3	Corner Connector (Type A / B)
4	Corner Upright
5	Base Plate (Type A / B)
6	Eave Purlin
7	Reinforce Beam (A) / Cross Brace (B)
8	Gable Eave Rail
9	Gable Support
10	Roof Purlin
11	Tension Bolt
12	Tension Bar
13	Connecting Rod
14	Mounting Fork

Item #	Description
15	M10 x 70 Bolt
16	M10 x 100 Bolt
17	M10 x 120 Bolt + Nut
18	Washer
19	M16 x 30 Bolt
20	Steel Stake
21	Weight Bracket
22	Roof Fabric
23	Side Wall
24	Front Wall/Back Wall
25	Gable Fabric
26	Pull Rope
27	Cross Wire
28	Stake Puller



4. Assembly Cautions

- a) Before commencing construction refer to the Ground Set Out plan of the marquee. Measure the ground area and confirm the marquee dimensions.
- b) Fix the Base Plate of the Marquee after assembling the complete frame.
- c) For safety reasons it is recommended that four persons setup any Crest Marquee. Read the instruction manual carefully and check all parts before construction.
- d) Check the wind and weather conditions before commencing construction.
- e) Ensure the area is free from any sharp objects and overhead objects.
- f) Ensure you have the correct ground fixings for your application.
 - 1. Grass: Steel Stakes
Fix each Base Plate with Steel Stakes. Ensure stakes are appropriately secured into the soft surface (Grass/Dirt).
 - 2. Concrete: Dynabolt
Fix each Base Plate with Dynabolts.
 - 3. Weight Plate: Ground Mounting (suitable for any surface)
Each Base Plate will need to have at least 200kg.
- g) Once constructed a safety inspection should be conducted on a regular basis.

4.1 Dismantle Cautions

- h) Mark and pack all components in appropriate product covers.
- i) Ensure Roof and Walls Fabrics are completely dry before packing down and fitting the protective covers. Do not put heavy items on top of the Marquee fabric during transport.

4.2 Maintenance

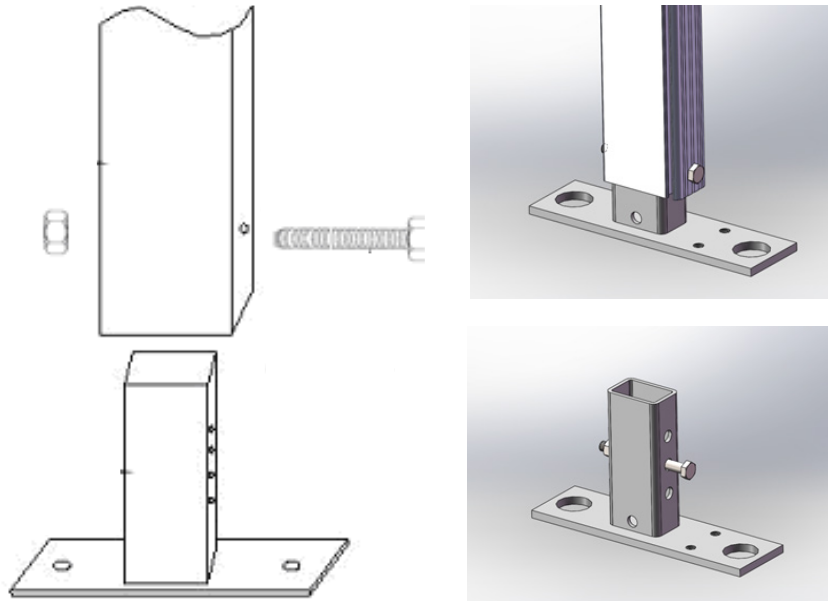
- j) The PVC should be cleaned with mild detergent, do not use any acidic or alcohol solutions. Only pack the PVC when it is dried thoroughly, to prevent mold or stains.
- k) Do not clean the aluminium parts by acid or high concentrated cleanser.
- l) Store in a cool, dry and clean environment and check the goods regularly.

4.3 Product Cautions and Safety

- m) When the marquee is in use, do not leave your marquee unattended.
- n) Wind rating as per engineering certificate, review weather conditions.
- o) When the Marquee is in use and if part of the structure looks damaged or not fit for purpose the marquee should be dismantled at once for safety reasons.

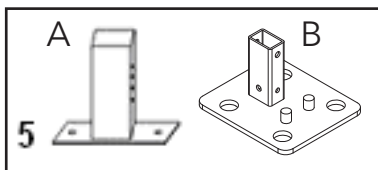
5. Construction

When commencing construction of the Crest Marquee build each frame bay section flat on the ground.



STEP 1: Assemble Base Plate and Corner Upright

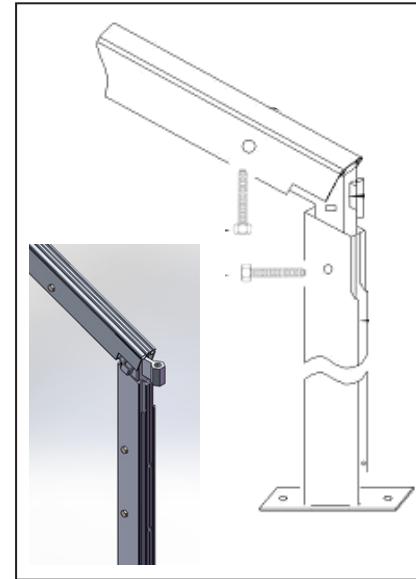
Position the Base Plate into the Corner Upright and bolt together.



Type A - FS Series 84 and FD Series 100 have adjustable feet

Refer to the Elevation Drawing and Parts List to confirm your method of construction for Step 2.

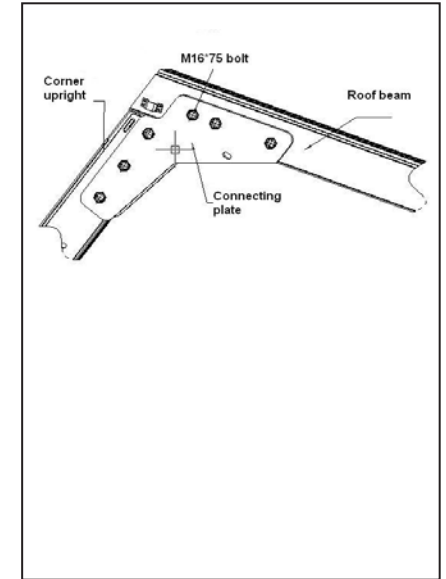
FRAME TYPE A



STEP 2 (A): Assemble Corner Upright, Corner Connector and Roof Beam

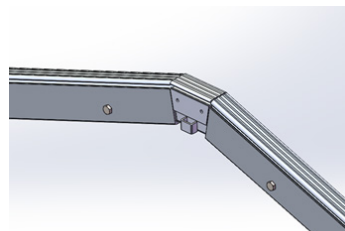
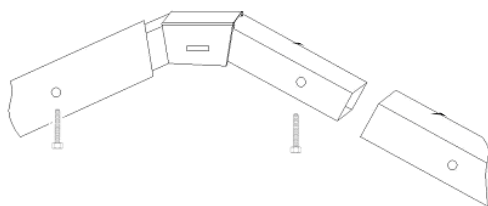
Put Corner Connector into Corner Upright and Roof Beam and bolt together.

FRAME TYPE B

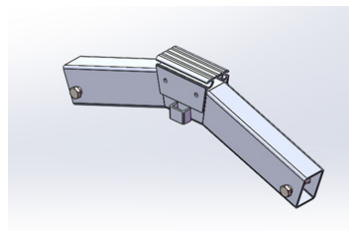


STEP 2 (B): Assemble Corner Upright and Roof Beams

Insert Roof Beam into the Upright Beam and bolt together.



Ridge Connector with Roof beams

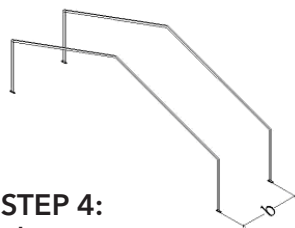


Ridge Connector

STEP 3: Assemble Ridge Connector with Roof Beams

Put Ridge Connector into Roof Beam and bolt together.

You have now completed one Bay, repeat the process until all Bays are constructed.

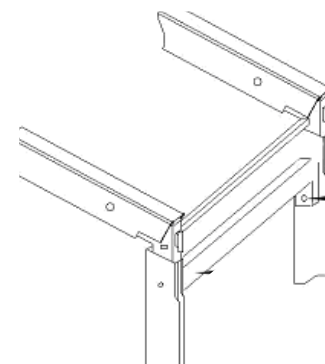


STEP 4: Elevate Frame

When two bays have been completed, stand up the first bay. Once upright hold into position with two team members or secure with ropes. Stand up second bay and move into position.

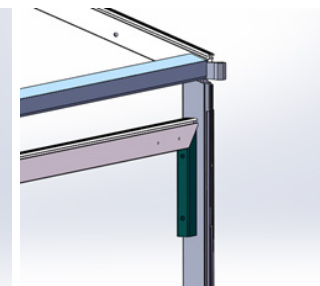
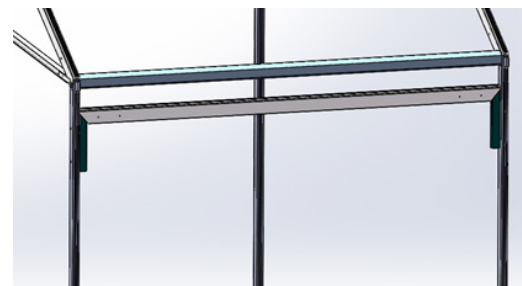
Diagram note: (b) 3m or 5m bays, refer to elevation diagram.

Refer to the Elevation Drawing and Parts List to confirm your method of construction for Step 5.



STEP 5 A: Connect the Reinforcing Beam

Connect the two bays together using the Frame Reinforcing Beam and bolt together.

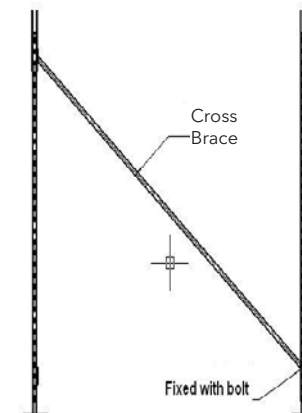


STEP 5 B: Connect the Cross Brace

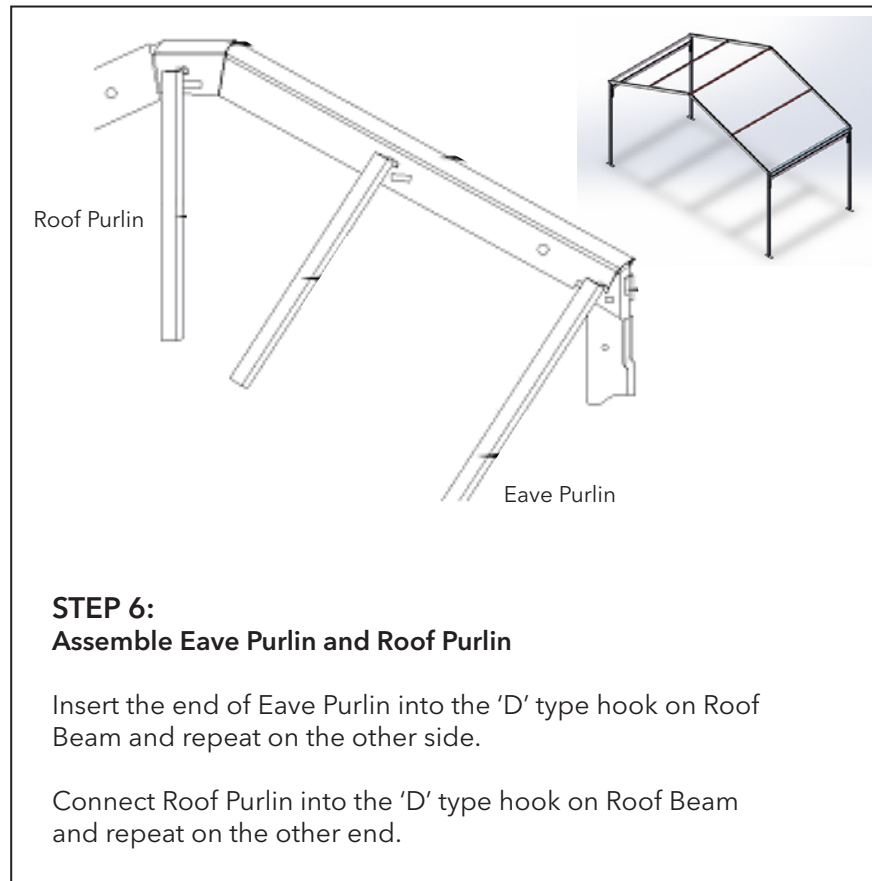
Refer to elevation diagram for positioning of Cross Braces.

Fix the Cross Brace to the Corner Uprights and bolt together.

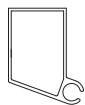
For FS and FD series, they don't have cross bracing on side. Only 10m span have roof cable.



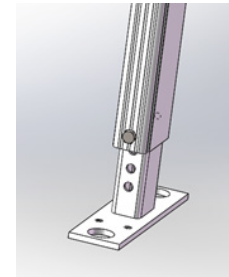
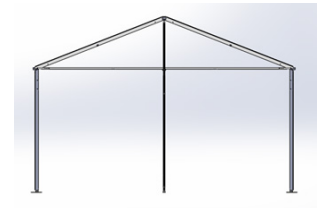
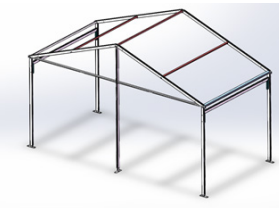
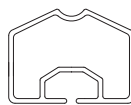
Refer to the Elevation Drawing and Parts List to confirm your method of construction for Step 6.



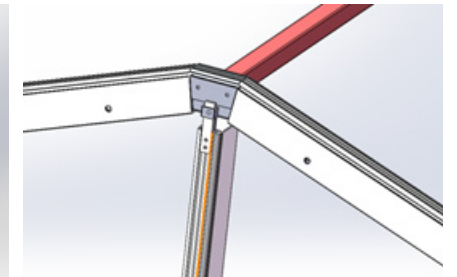
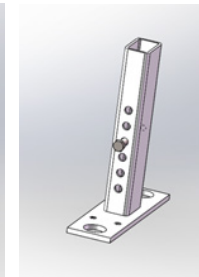
A - Eave Purlin Type



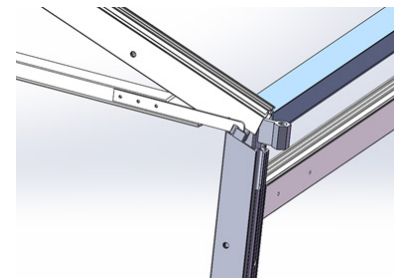
B - Eave Purlin Type



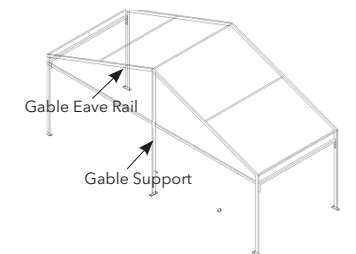
Gable Support with gable base plate



Gable support top view



Gable Eave Rail



STEP 7: **Assemble Gable Support and Gable Eave Rail**

Insert the end of Gable Support into the 'U' type hook of Ridge Connector and fix with Bolt.

Fit the 'hook' end of Gable Eave Rail on the 'D' type hook of Gable Support.

Fit the other Gable Eave Rail to the 'D' type hook on the Corner Connector.

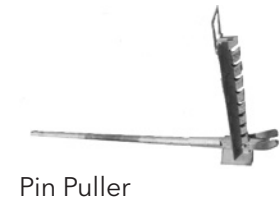
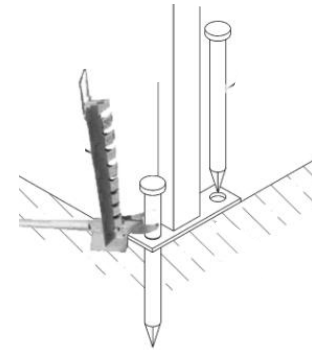
Repeat this step for the other Gable End of the Marquee.

STEP 8: Ground Fixings

The frame must be fixed and secure prior to installing the Roof and Wall Fabric.

Ensure you have the correct ground fixings for your application.

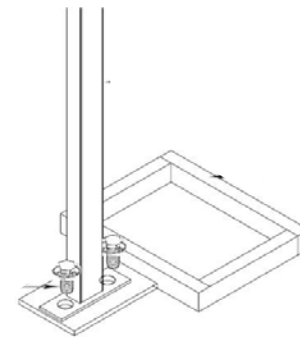
1. Grass: Steel Stakes
Fix each Base Plate with Steel Stakes. Ensure stakes are appropriately secured into the soft surface (Grass/Dirt).
2. Concrete: Dynabolt
Fix each Base Plate with Dynabolts.
3. Weight Plate: Ground Mounting (suitable for any surface)
Each Base Plate will need to have at least 200kg.



8.1 Securing Steel Stakes and removing Steel Stakes

Insert Steel Stake into the opening of Base Plate and drive Steel Stake into the ground with a mallet/hammer until securely fixed.

When removing Steel Stakes use the Stake Puller to remove.



8.2 Weight Plate Fixing

Fix the Corner Upright with the Weight Bracket using bolts and washers as seen in the above drawing.

INSTALLATION HINTS & TIPS

Installation of Roof Fabric

View of the 'outside' and 'underside' of Roof Panels.

Outside of Roof Panels



Underside of Roof Panels



REFER TO STEP 9 ON NEXT PAGES

INSTALLATION HINTS & TIPS

Installation of Roof Fabric

When connecting the Ropes to the Webbing on Roof Panel **DO NOT tie a knot** use the following loop technique. This technique avoids the knot getting wedged of Roof Purlins.



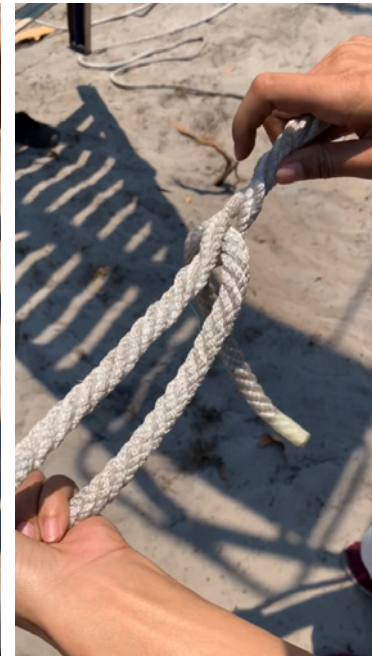
1. Fold the rope.



2. Open a section of inter-twined rope.



3. Pull the 'start' of the rope through the opening.



4. Twirl the rope to 'close' the opening.



5. View of loop technique.

Connect the loop and pull the Roof Panels through the channels of the Roof Beam. To pull the Roof Panels through use either two to four people on either rope or a forklift or other powered machines dependant on size of Crest.

Watch video <https://www.extreme-marquees.com.au/folding-marquees/extreme-video-gallery/>

REFER TO STEP 9 ON NEXT PAGE

STEP 9:
Installation of Roof Fabric

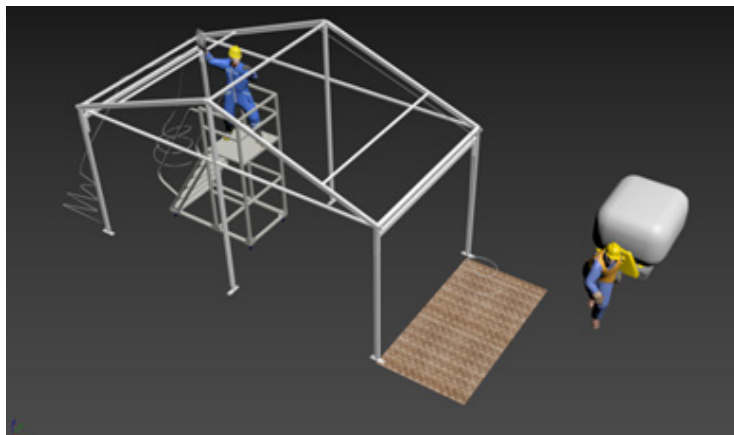


Image 1

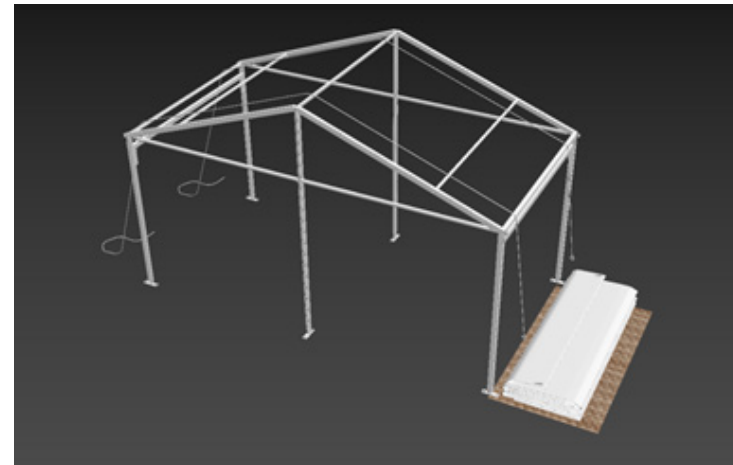


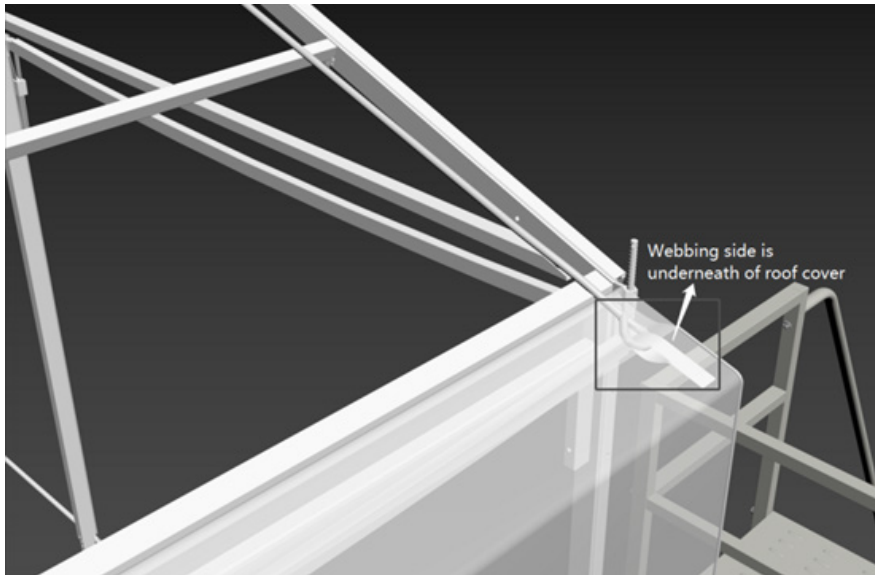
Image 2

9.1

Put the two installation ropes on the top of the frame as image 1 & 2.

Layout the roof cover on ground as image 2

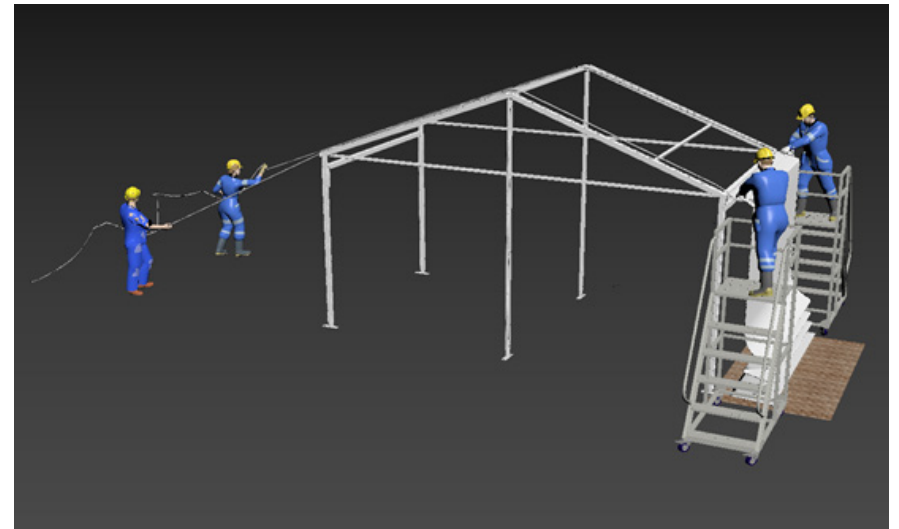
To keep the roof cover clean, pls put one fabric or carpet or pallet on the bottom to hold the roof.



9.2

Tie the installation ropes around the webbing of the roof cover.

IMPORTANT The webbing and tied off rope MUST be on the underside of the roof panel.



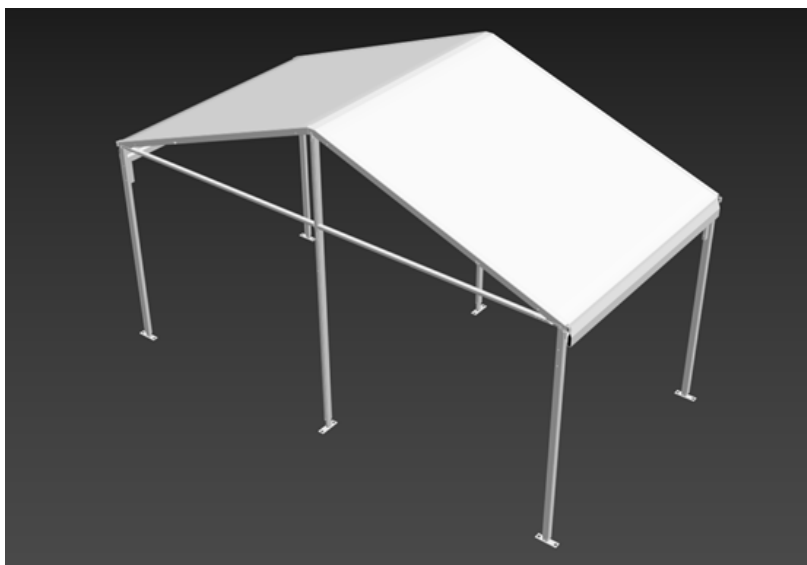
9.3

Insert the left/right kedar side of roof cover into channel of roof beam.

Four people are required to completed this process.

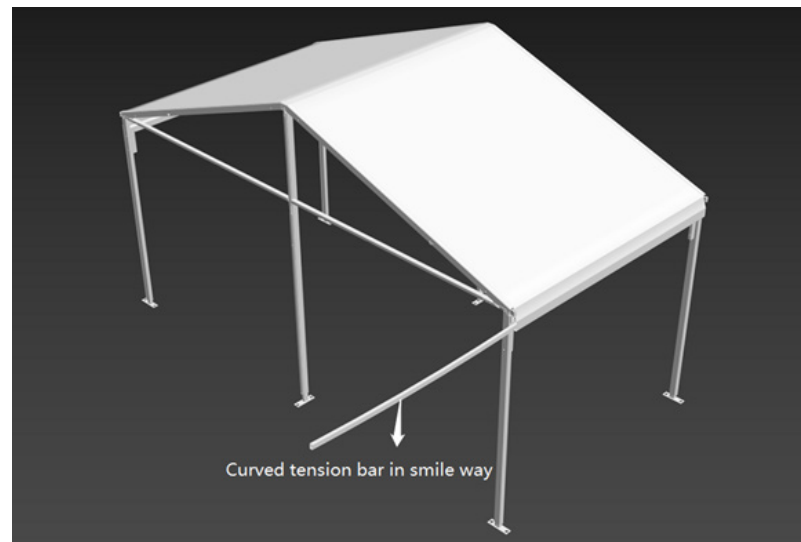
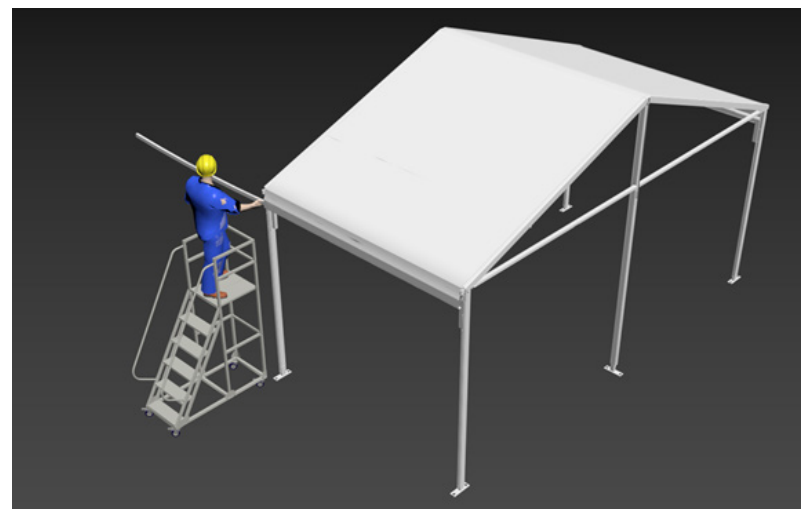
Two people to evenly insert the kedar of the roof panel into the channel of the roof beam.

Two people on the opposite side evenly pulling the ropes to thread the roof panel.



9.4

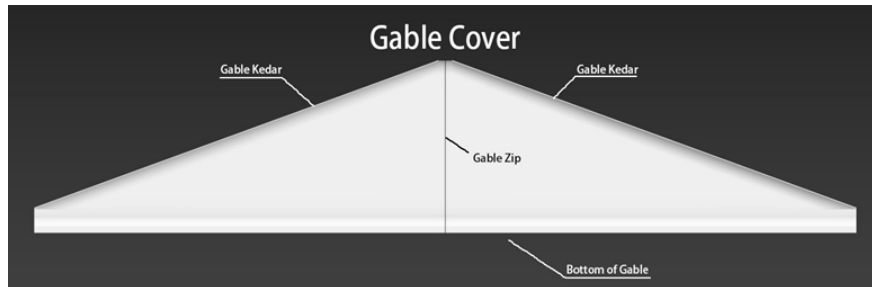
Continue to thread the roof kedar into the channel of the roof beam until the roof is fitted.



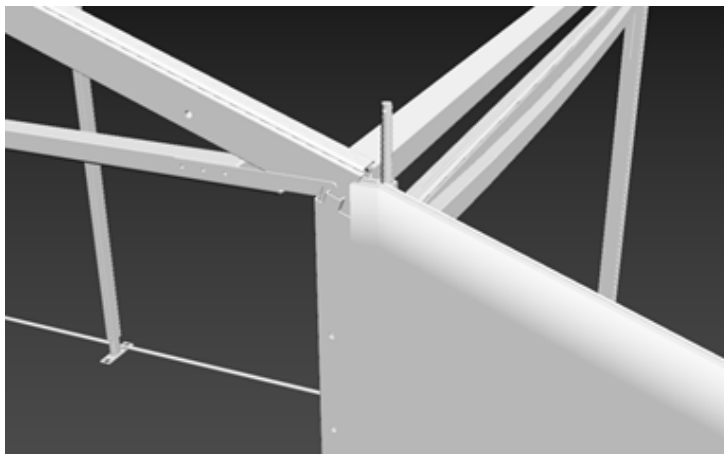
9.5

Insert the curve tension bar into bottom sleeve of roof cover. The bar is to be inserted the 'smiley' way up.

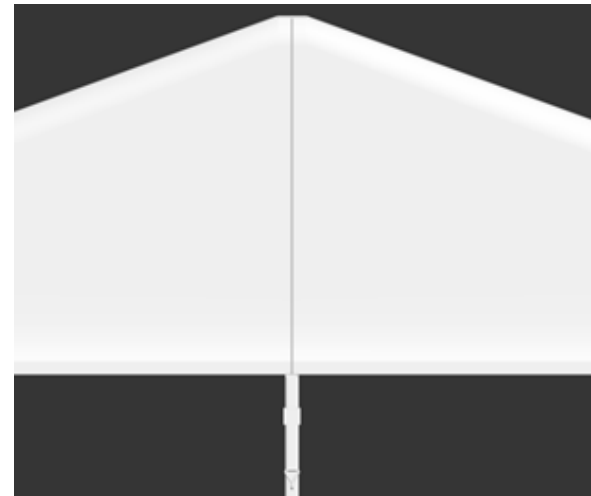
STEP 10:
Installing the Gable Fabric



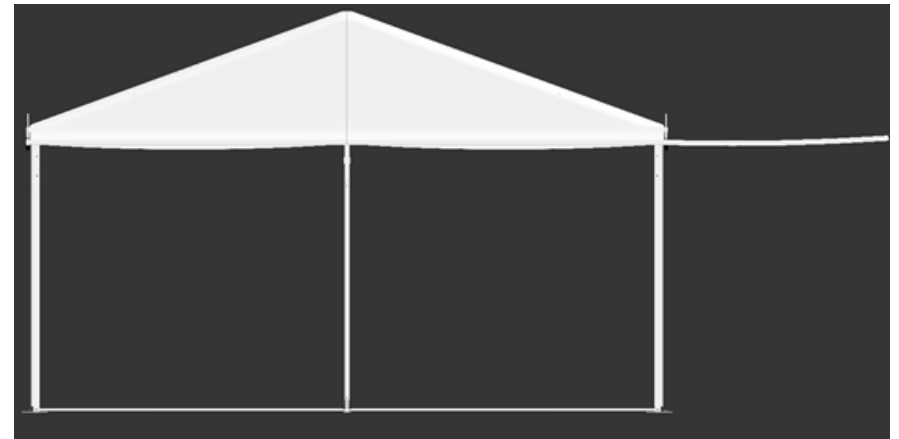
10.1
Un-zip/separate the gable into two pieces left/ right.



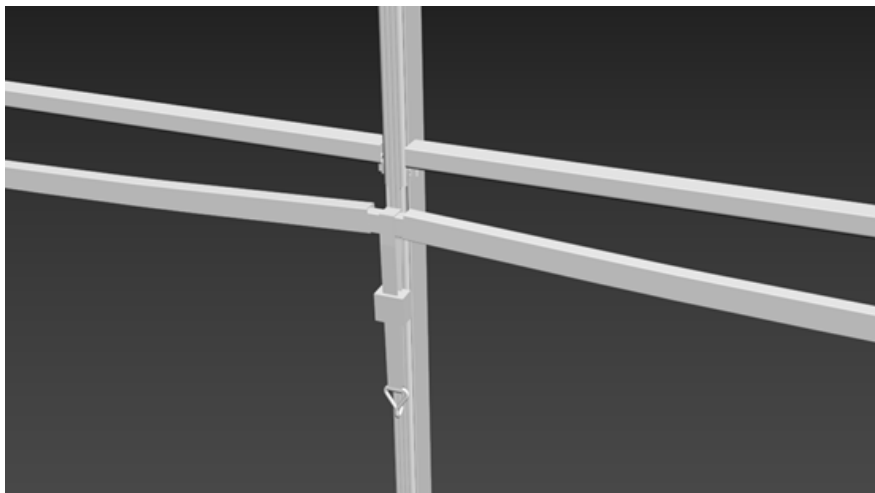
10.2
Insert the left/right side of gable cover kedar into the channel of roof beam, slide the fabric from bottom to the top of the roof beam.



10.3
Zip the centre of the left/right gable cover together

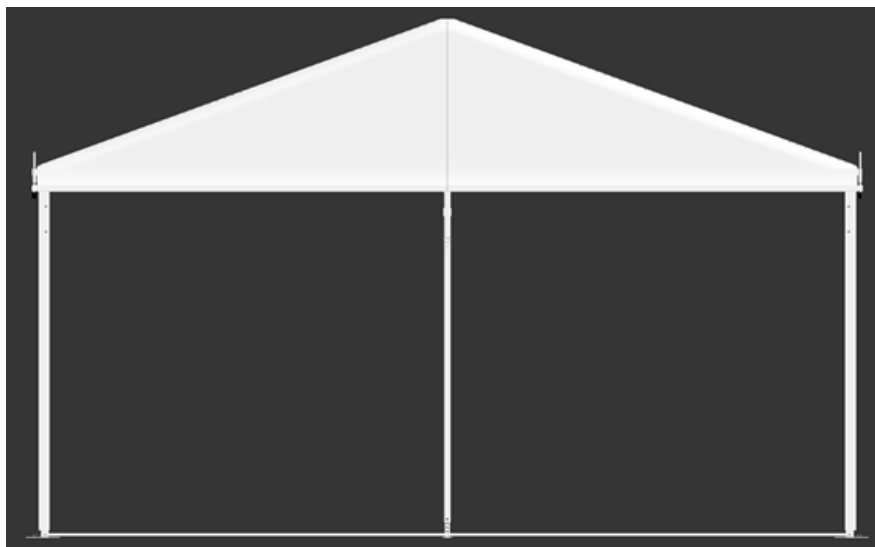


10.4
Insert the curve tension bar into bottom sleeve of the gable cover.
IMPORTANT : Curve tension bar must be put into the sleeve in 'smiley' way up.



10.5

Install one connecting tube to connect the two curve tension bars and use fastener to tension gable cover.



10.6

Finished gable cover

STEP 11: Installing the Side Wall Fabric

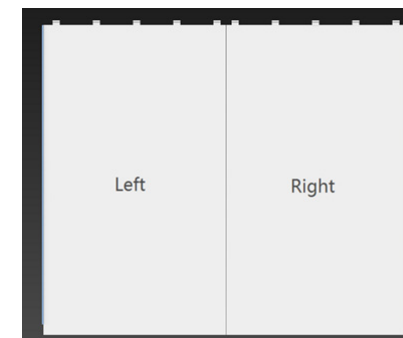


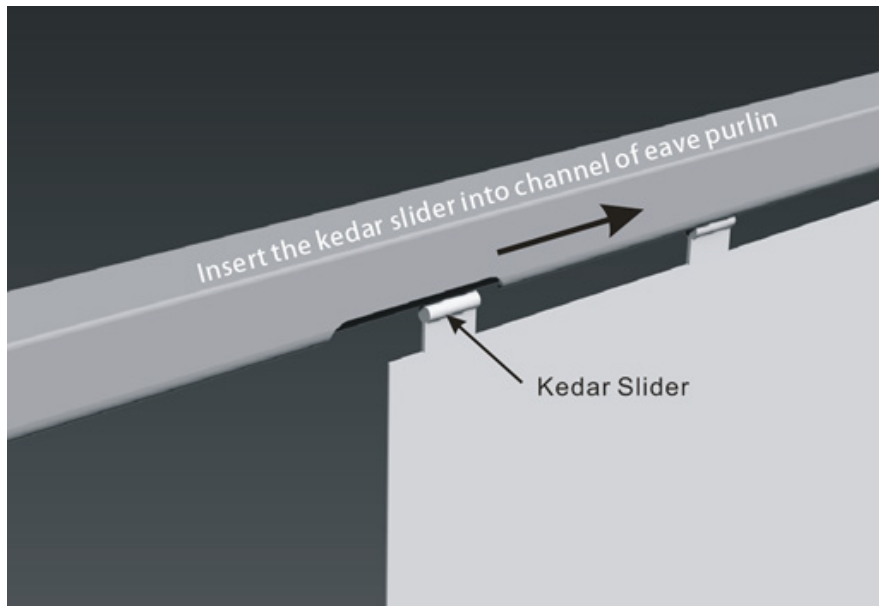
NOTE: Inside view of wall

11.1

Un-zip/separate the wall into two pieces left/right

IMPORTANT The sleeve at the bottom of the wall panel is to be on the inside of marquee.

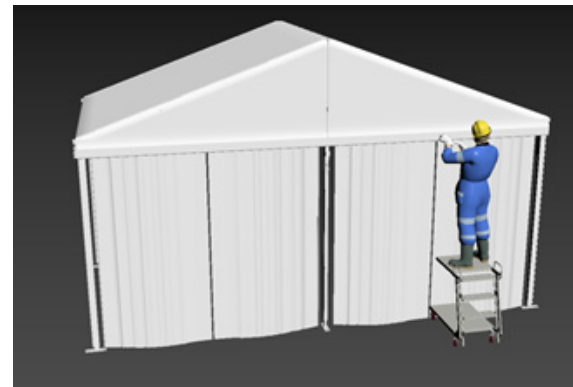


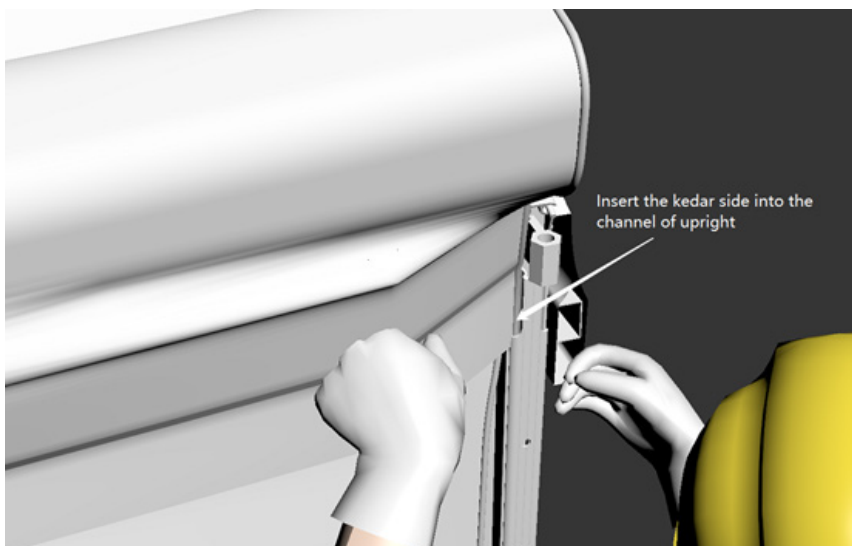


11.2

Insert/slide the wall kedar into channel of eave purlin

Tip: gable & side wall use the same installation method

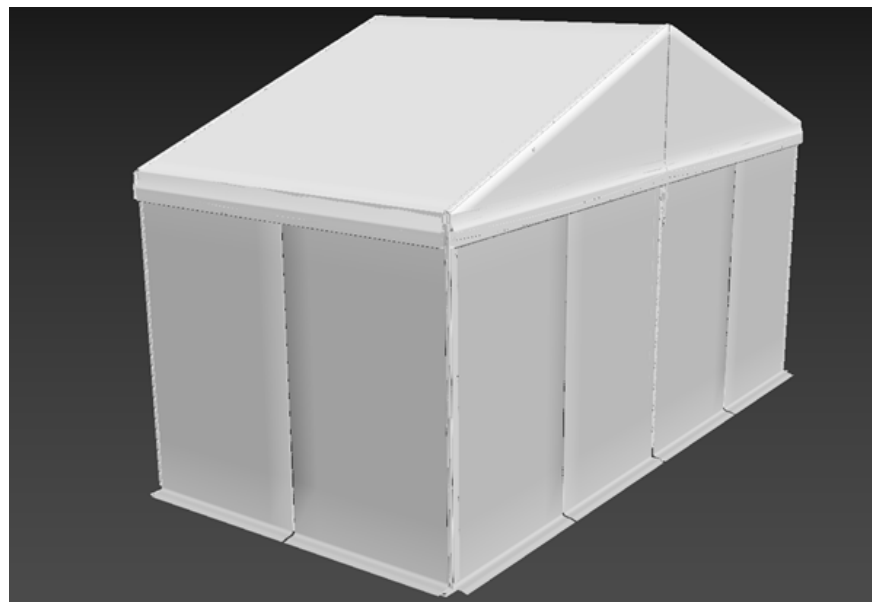
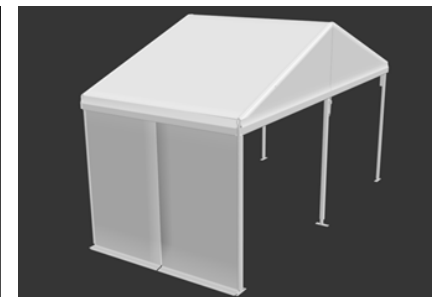
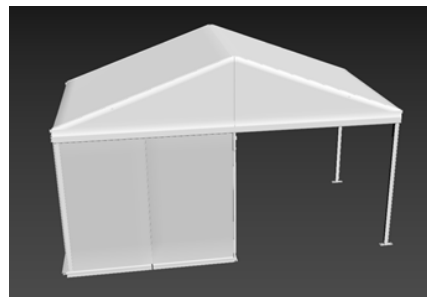




11.3

Insert the left/right kebab of the side wall into the channel of uprights.

Slide the wall kebab from top to bottom of the side uprights.



11.4

Zip the centre of the left/right side walls together.

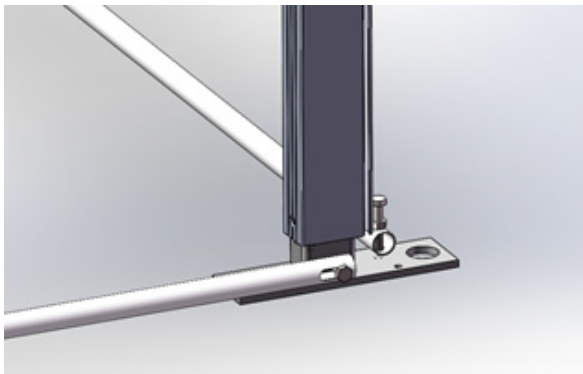
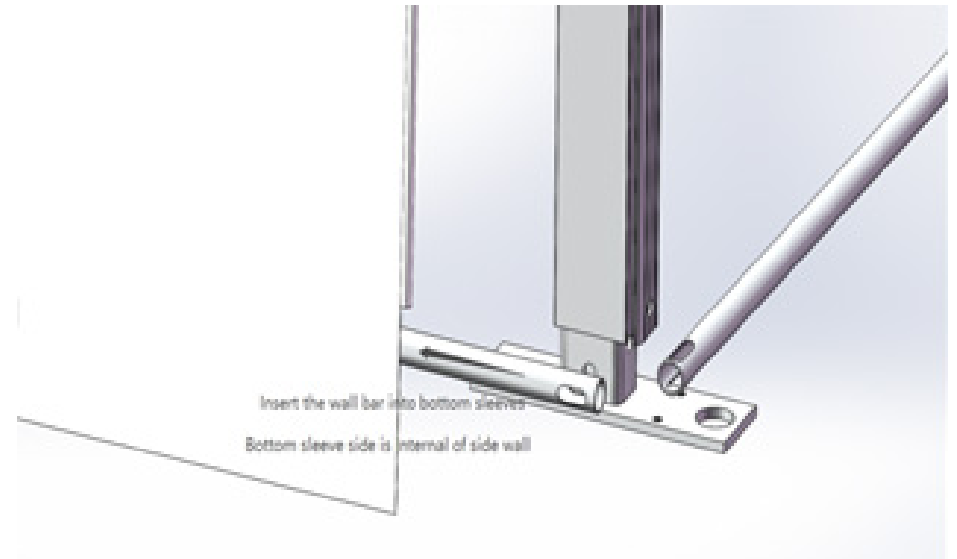
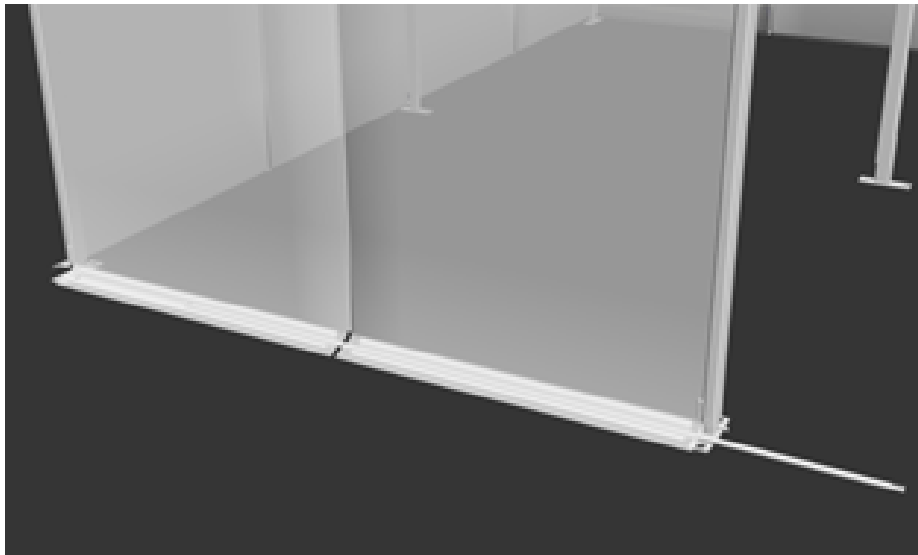


Image 1

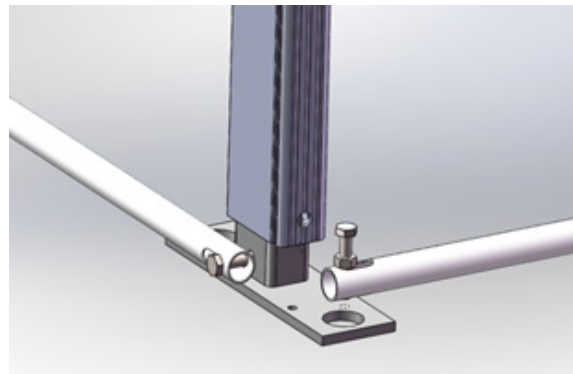


Image 2

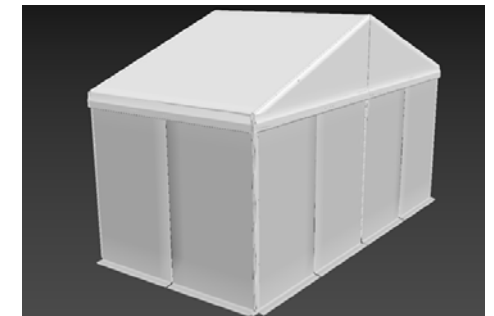


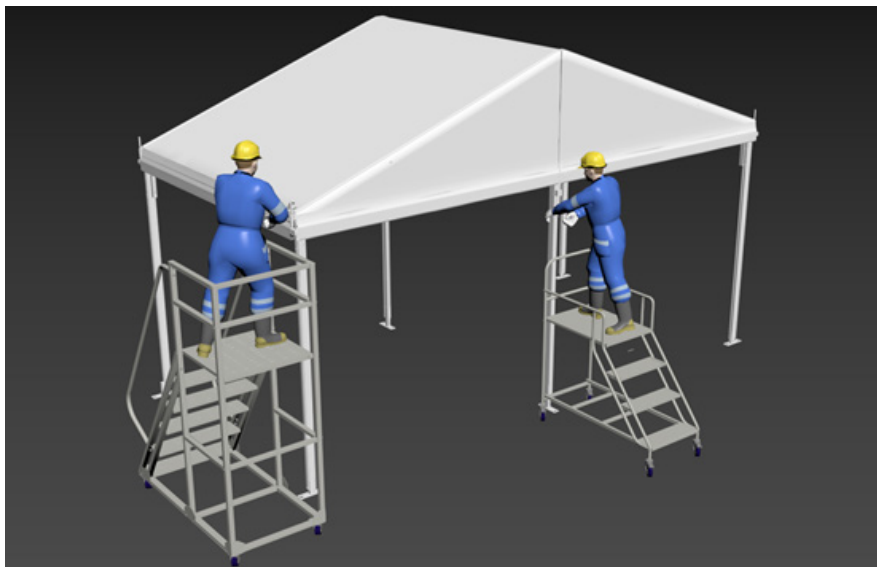
Image 3

11.5

Insert the wall bar into the bottom sleeve of the wall, using bolts tension the wall to the frame.

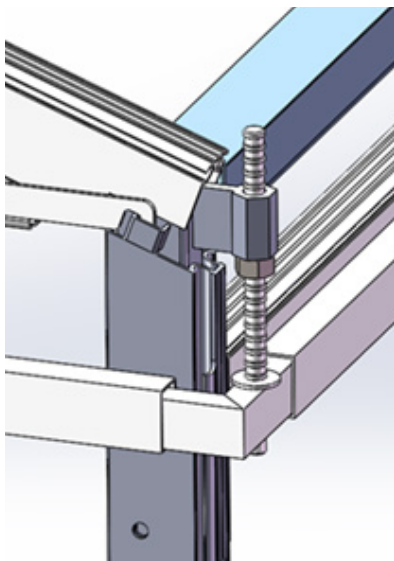
*Tips: Gable end wall bar/s, refer to image 1 and 2.
Side panels wall bar/s, refer to image 3.*





PLEASE NOTE:

The tension work can only be completed once the roof, gable, and side walls have been installed.



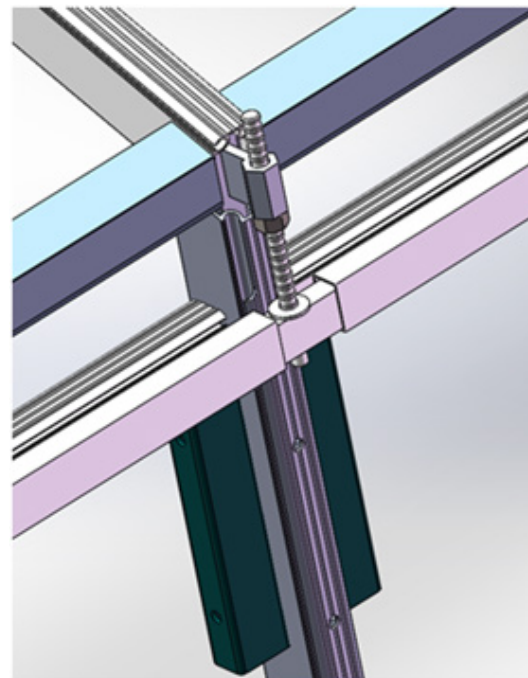
STEP 12
Fix Thread Bracing and Tension Bar

12.1

Corner tension instructions for roof and gable cover.

Install the right angle connector to secure the curve tension bars (2) on gable end and side panel, lightly tension the bolt.

Tips: The tension work can only be completed once the roof, gable, and side walls have been installed.



12.2

Internal bay roof tension system

Install one connecting tube to connect the two curve tension bars. Using an eave screw to tension the two roof panels together.

Product Cautions and Safety

When the marquee is in use, do not leave your marquee unattended.

Wind rating as per engineering certificate, review weather conditions.

When the Marquee is in use and if part of the structure looks damaged or not fit for purpose the marquee should be dismantled at once for safety reasons.



EXTREME MARQUEES

P 1300 850 832 F 07 3355 7720

admin@extreme-marquees.com.au

3 Bailey Court, Brendale, QLD, Australia 4500



SHOP ONLINE

www.extreme-marquees.com.au

